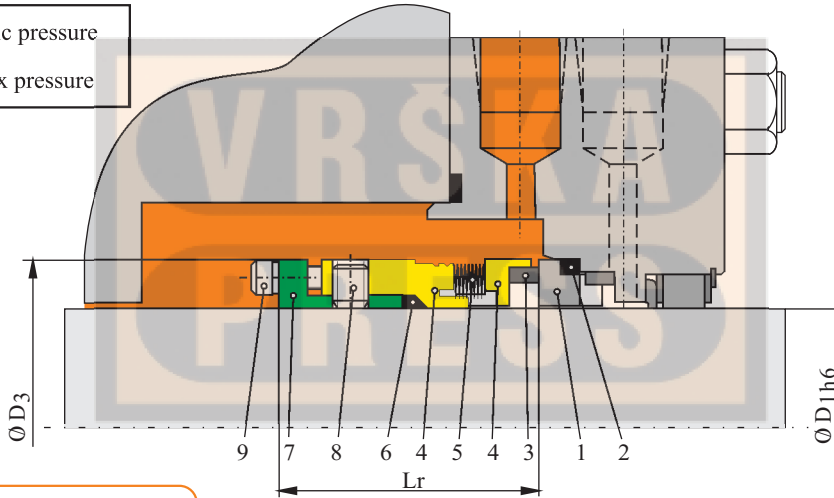
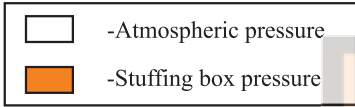


VD13

Single, Inner, Metal bellows mechanical seal
Independent of the shaft rotating direction



LIMITING FACTORS

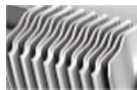
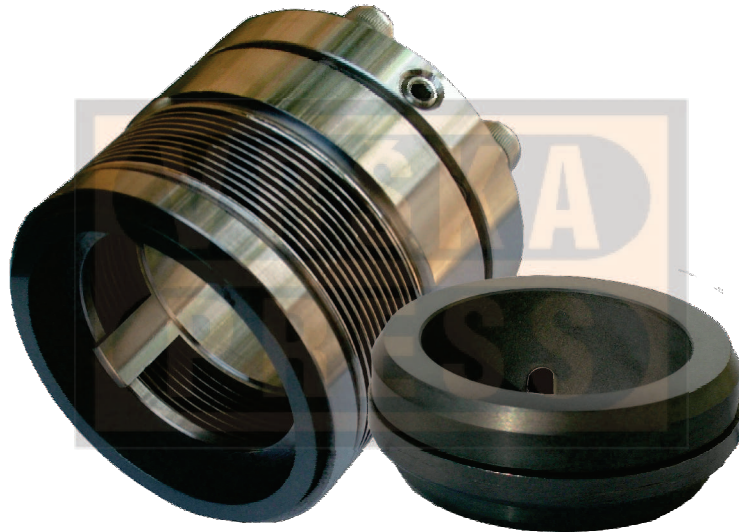
$p_1 =$ from vacuum to 69 bar
 $t = -75$ to 425°C

LIST OF ELEMENTS

1. Stationary seat
2. Secondary seal
3. Rotary seal ring
4. Housing
5. Metal bellows
6. Secondary seal
7. Tightening ring
8. Fixing screw
9. Tightening screw

DIMENSION TABLE (inch)

Seal Dash Number	D1	Lr	D3
16	0,750	2,312	1,625
18	0,875	2,343	1,750
20	1,000	2,343	1,875
22	1,125	2,375	2,000
24	1,250	2,375	2,125
26	1,375	2,468	2,250
28	1,500	2,500	2,375
30	1,625	2,500	2,500
32	1,750	2,531	2,625
34	1,875	2,531	2,750
36	2,000	2,562	2,875
38	2,125	2,562	3,000
40	2,250	2,750	3,250
42	2,375	2,781	3,375
44	2,500	2,781	3,500
46	2,625	2,875	3,687
48	2,750	3,000	3,812
50	2,875	3,000	4,000
52	3,000	3,000	4,125
54	3,125	3,000	4,250
56	3,250	3,000	4,375
58	3,375	3,000	4,500
60	3,500	3,000	4,625
62	3,625	3,000	4,750
64	3,750	3,000	4,875



Welded metal bellows



Single ply



Double ply

Working condition

High-performance VD13 metal bellows type. The VD13 type of metal bellows mechanical seal is designed for working in extremely hard conditions. It is widely used in refinery, petrochemical, chemical industry, paper making, pharmacy etc., where temperature and viscosity plays an important role. Drive lugs under the metal bellows provide added rotational drive, which reduce torsional stress on the bellows.

It is suitable for low-temperatures and high-temperatures.

Temperature range from -75°C to 425°C .

Standard metal bellows VD13 type

Standard metal bellows VD13 type is performed in single ply welded metal bellows pressure range from vacuum to 20 bar.

Improved metal bellows VD13 type

Improved metal bellows VD13 type is performed in double ply welded metal bellows pressure range from 20 bar up to 69 bar.

Design and constructive characteristics

Materials of construction:

Metal bellows: AM 350, SUS 316L, Inconel 718, Hastelloy C, Titanium, Alloy 20;

Rotary seal ring: SiC, TC, Carbon;

Stationary seal ring: SiC, TC, Carbon;

Secondary seal: Flexible Carbon;

Other Parts: SUS 316, SUS 304, Hastelloy C, Titanium.